

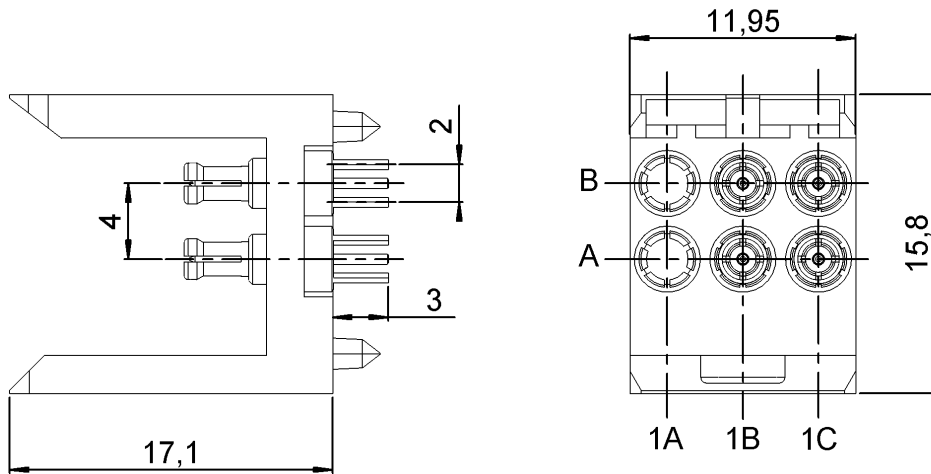
STR. MALE MODULE 4 COAX TYPE INSERTS

R694.251.025

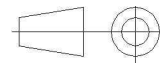
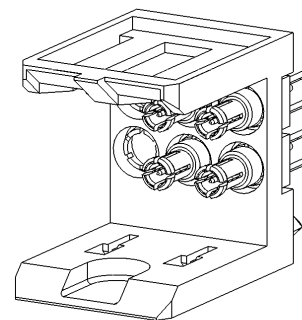
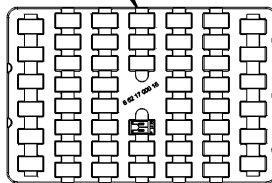
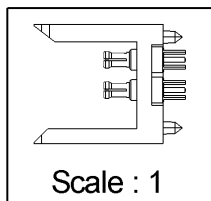
3 MM FOR PCB

Series : MCC2

4 Coax Position AB/1B,1C



Connectors' packaging



All dimensions are in mm.

COMPONENTS	MATERIALS	PLATING (µm)
BODY	BRONZE	NPGR
CENTER CONTACT	BRASS	NPGR
OUTER CONTACT	BRONZE	NPGR
INSULATOR	PTFE	
GASKET	-	
OTHERS PARTS	LIQUID CRISTAL POLYMER	
-	-	
-	-	

Issue : 0624 C

In the effort to improve our products, we reserve the right to make changes judged to be necessary.



STR. MALE MODULE 4 SOLDER TYPE INSERTS

R694.251.025

3 MM FOR PCB

Series : MCC2

PACKAGING

SPECIFICATION

Standard	Unit	Other
50	'W' option	Contact us

ELECTRICAL CHARACTERISTICS

ENVIRONMENTAL

Impedance	50	Ω
Frequency	0-6	GHz
VSWR	1.12 + 0,0000	x F(GHz) Maxi
Insertion loss	0.2	$\sqrt{F}(\text{GHz})$ dB Maxi
RF leakage	- (- F(GHz)) dB Maxi
Voltage rating	500	Veff Maxi
Dielectric withstanding voltage	750	Veff mini
Insulation resistance	5000	M Ω mini

Operating temperature	-25/+125	$^{\circ}\text{C}$
Hermetic seal	NA	Atm.cm3/s
Panel leakage	NA	

OTHER CHARACTERISTICS

Assembly instruction

Others :

VSWR=1.12 optimized between DC to 3GHz

MECHANICAL CHARACTERISTICS

Center contact retention		
Axial force – Mating end	6	N mini
Axial force – Opposite end	6	N mini
Torque	NA	N.cm mini
Recommended torque		
Mating	NA	N.cm
Panel nut	NA	N.cm
Mating life	500	Cycles mini
Weight	97,8400	g

Issue : 0624 C

In the effort to improve our products, we reserve the right to make changes judged to be necessary.

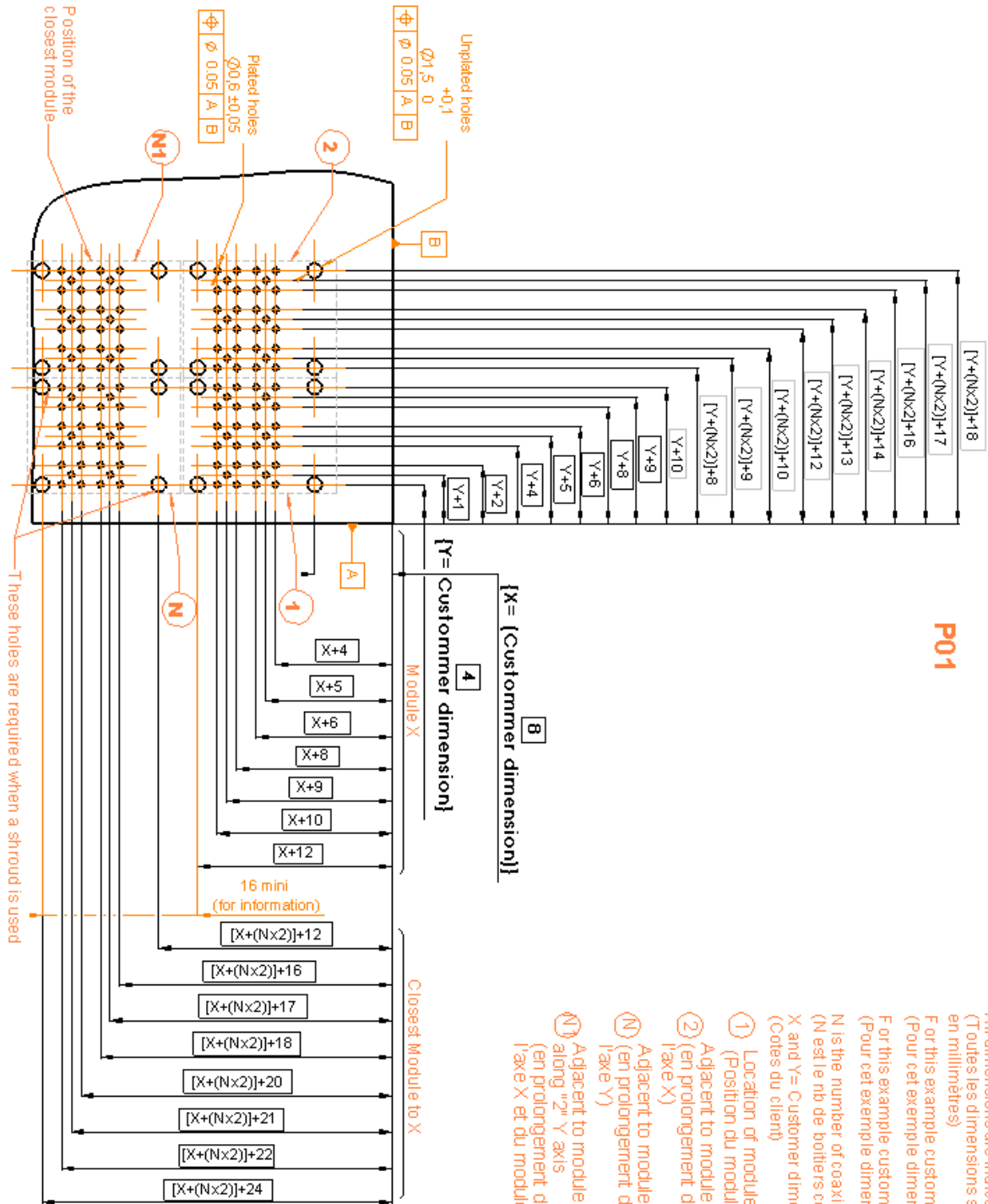


STR. MALE MODULE 4 SOLDER TYPE INSERTS

R694.251.025

3 MM FOR PCB

Series : MCC2



P01

- All dimensions are indicated in millimetres
(Toutes les dimensions sont indiquées en millimètres)
- F for this example customer dimension X=8mm
(Pour cet exemple dimension du client X=8mm)
- F or this example customer dimension Y=4mm
(Pour cet exemple dimension du client Y=4mm)
- N is the number of coaxipack 2
(N est le nb de boîtiers coaxipack 2)
- X and Y = Customer dimensions
(Cotes du client)
- ① Location of module "1"
(Position du module "1")
 - ② Adjacent to module "1" along X axis
(en prolongement du module "1" selon l'axe X)
 - ③ Adjacent to module "1" along Y axis
(en prolongement du module "1" selon l'axe Y)
 - ④ Adjacent to module "N" along X axis and along "2" Y axis
(en prolongement du module "N" selon l'axe X et du module 2 selon l'axe Y))

Issue : 0624 C

In the effort to improve our products, we reserve the right to make changes judged to be necessary.



RADIALL®

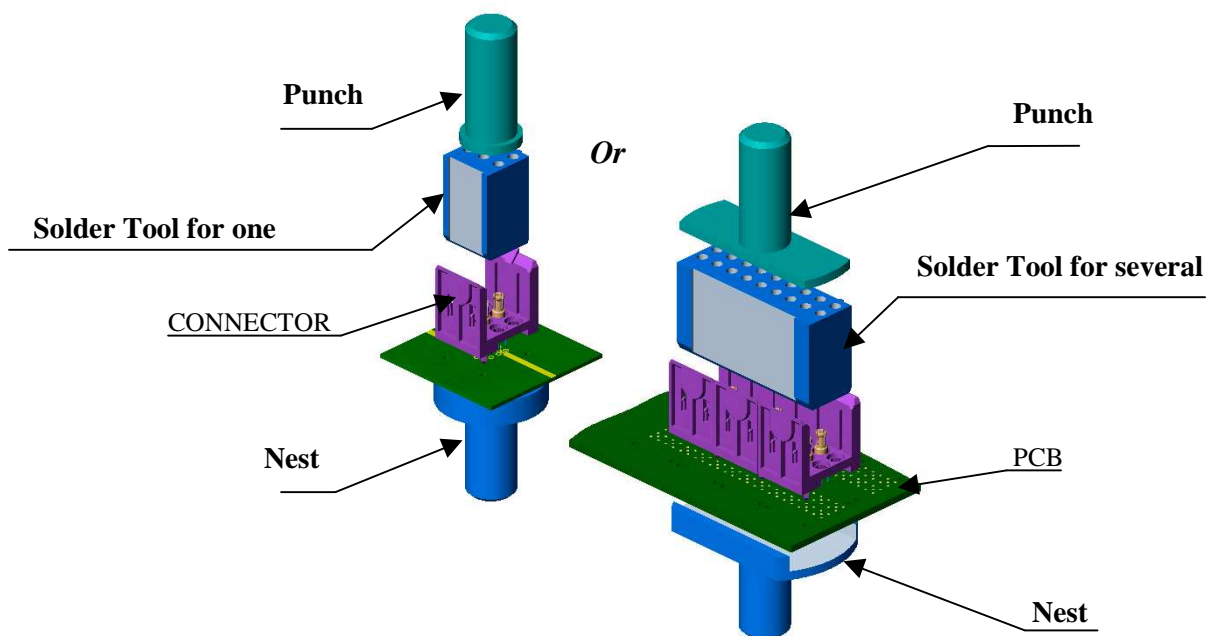
STR. MALE MODULE 4 SOLDER TYPE INSERTS

R694.251.025

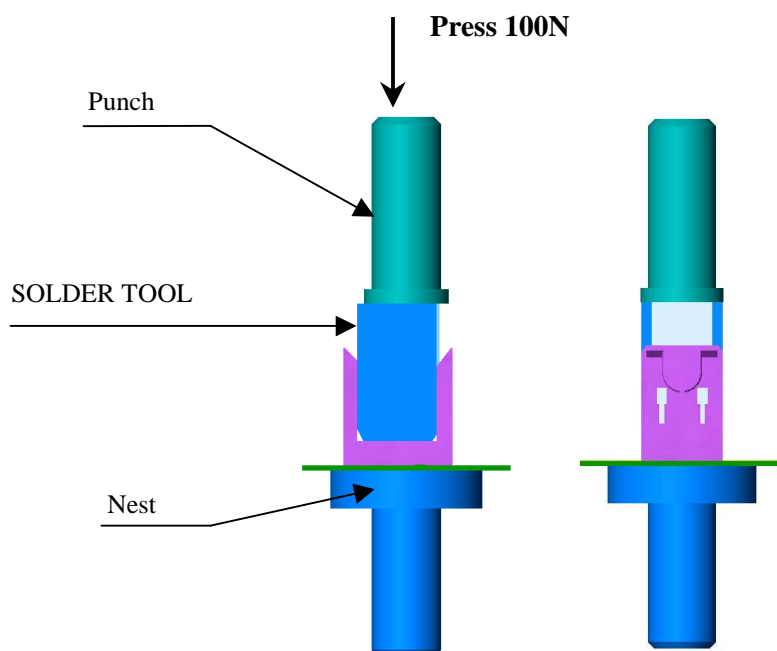
3 MM FOR PCB

Series : MCC2

- Place the coax connector(s) on the PCB



- Place correctly the PCB between the punch and the nest of the press.
- In case of multiple housing configuration , use a punch and a nest large enough to cover all the housings.
- Ensure solder legs are properly aligned with the holes before press-mounting.
- Press on the housing(s) with the punch until the complete insertion of the fixing stud into the PCB.



Issue : 0624 C

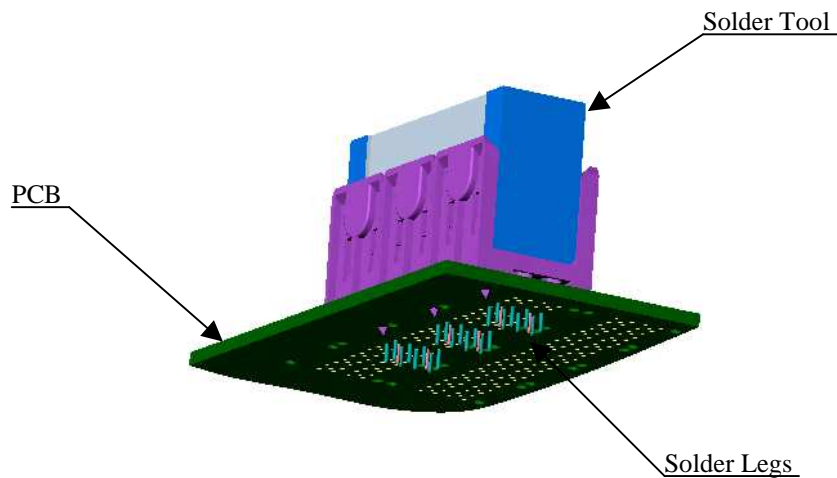
In the effort to improve our products, we reserve the right to make changes judged to be necessary.



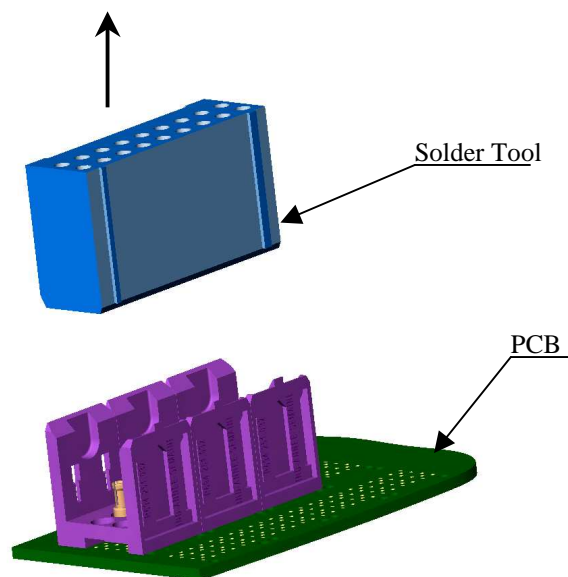
STR. MALE MODULE 4 SOLDER TYPE INSERTS**R694.251.025****3 MM FOR PCB**

Series : MCC2

- After the insertion of the connectors on the printed circuit , leave the solder tool inserted in position.
- Solder the legs on board



- After the solder legs have been soldered , using an appropriate soldering process , remove the solder tool.



Radiall do not recommend to use more than 3 modules on the same motherboard and can't be held liable of any connection defect when more than 3 modules are implemented on the board.

Issue : 0624 C

In the effort to improve our products, we reserve the right to make changes judged to be necessary.

